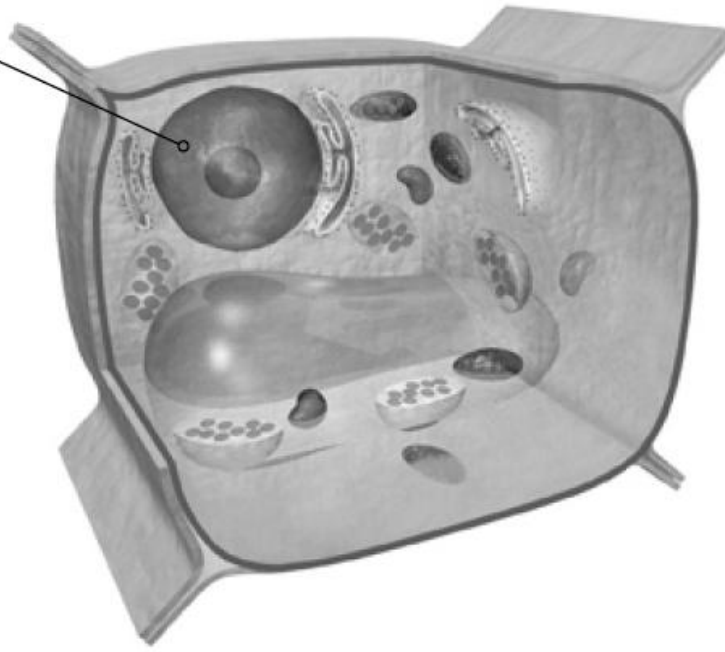




**cell**

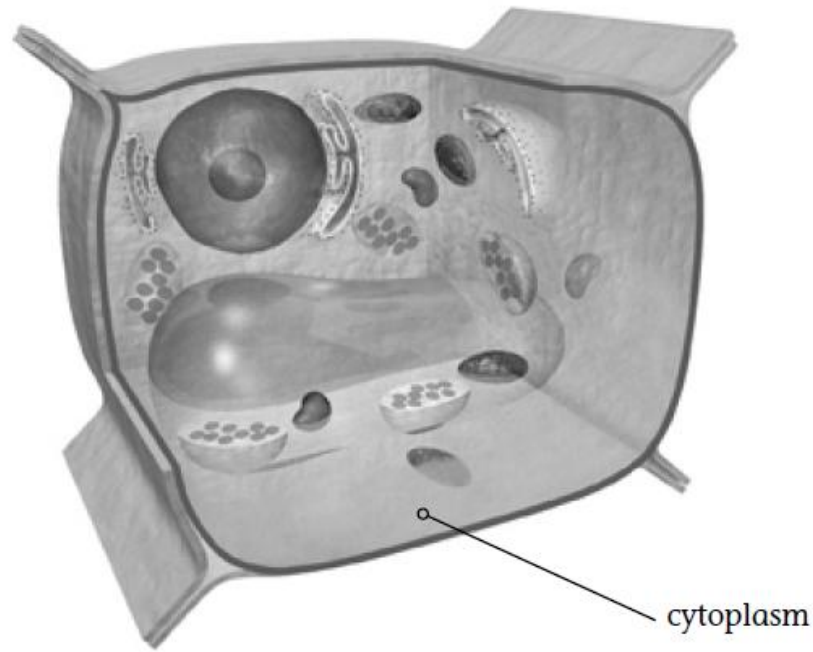
## **the building block of life**

nucleus



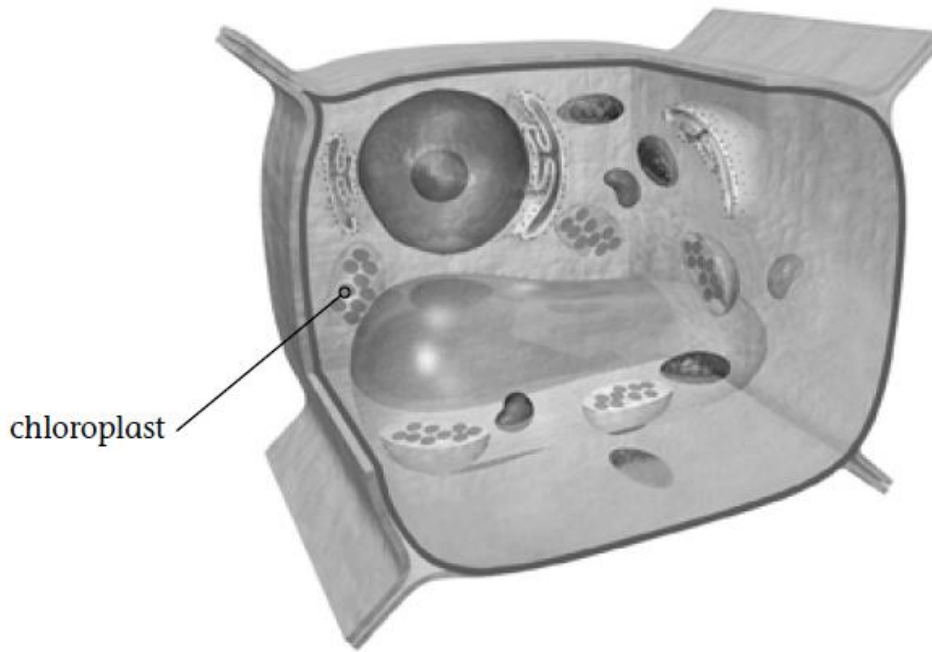
**nucleus**

**the control center  
of the cell**



# cytoplasm

**a gel-like liquid inside  
the cell membrane that  
contains the things that  
the cell needs to carry out  
life processes**



# chloroplast

**a special part of a plant  
that traps the energy in  
sunlight for making food**



**genus**

**a grouping that  
contains similar,  
closely related animals**



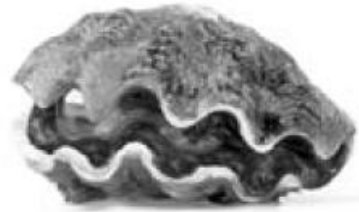
**species**

**a group of similar  
organisms that can mate  
and produce offspring**



# **vertebrates**

## **animals with backbones**



# **invertebrates**

## **animals without backbones**